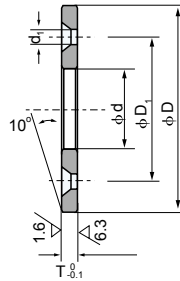
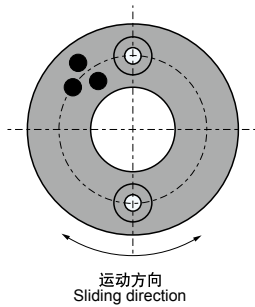


CBL-500C 自润滑止推垫片标准公制尺寸 CBL-500C CBLif-lubricating Thrust Washer Standard Metric Size



单位Unit: mm

型号规格 Standard No.	φd	φD	T _{-0.10} ⁰	螺孔 Bolt Hole				
				φD ₁	平头螺钉 Crop Bolt	φd ₁	孔数 Bore Number	
CBL-500C-10	10.2	30	3	20	M3	3.5	2	
CBL-500C-12	12.2	40		28				
CBL-500C-13	13.2							
CBL-500C-14	14.2							
CBL-500C-15	15.2							
CBL-500C-16	16.2	50		35				
CBL-500C-18	18.2							
CBL-500C-20	20.2							
CBL-500C-25	25.2		55		40	M5		6
CBL-500C-30	30.2	45						
CBL-500C-35	35.2	50						
CBL-500C-40	40.2	80	7	60	M6	7		
CBL-500C-45	45.3	90		70				
CBL-500C-50	50.3	100		75				
CBL-500C-55	55.3	110	8	85	M6	7		
CBL-500C-60	60.3	120		90				
CBL-500C-65	65.3	125		95				
CBL-500C-70	70.3	130		100				
CBL-500C-75	75.3	140	10	110	M8	9		
CBL-500C-80	80.3	150		120				
CBL-500C-90	90.5	170		140				
CBL-500C-100	100.5	190		160			M10	11
CBL-500C-120	120.5	200		175				